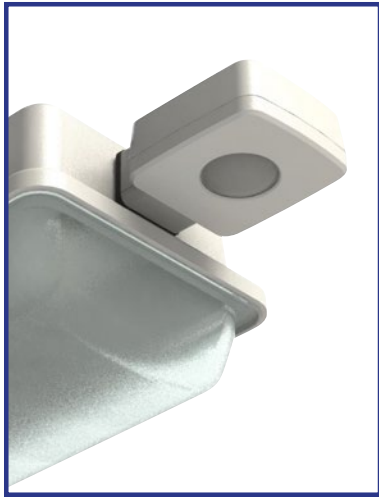


Douglas Lighting Controls Bluetooth® Fixture Controller



Features

- Bluetooth® wireless technology
- Occupancy and daylight sensors
- Water-tight/water-proof (IP65)
- 0-10V dimming, CLC, bi-level set-points, ON/OFF
- Deck level configuration using smartphone app

The Douglas Lighting Controls **Bluetooth®** Fixture Controller & Sensor provides automated individual and group control of light fixtures using onboard sensors and Bluetooth technology.

The Douglas Lighting Controls Bluetooth Fixture Controller & Sensor is easily installed for ON/OFF or bi-level light functionality. The daylight sensor provides additional energy savings by adjusting (0-10V dimming) the lights to work with the amount of natural daylight available in open-sided parking garages or from windows.

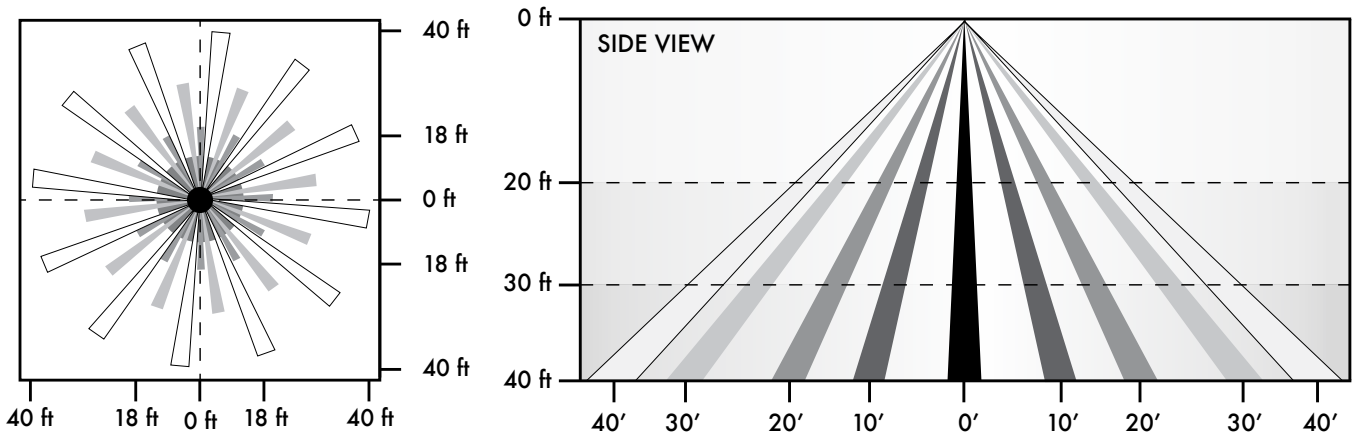
Configuration of the Douglas Lighting Controls Fixture Controller & Sensor is done conveniently at deck level with our free Smartphone App using Bluetooth protocol to communicate with the device. A Bluetooth mesh network is created between devices for control over a group of Douglas Lighting Controls Bluetooth® Fixture Controller & Sensors.

The Controller & Sensor has a maximum vertical range of 40 feet and is powered from the fixture. It is tested to applicable UL and CSA standards and enables users to meet ASHRAE 90.1 and Title 24 energy code requirements. Once the device(s) are configured, the system will automatically operate to control lighting based on occupancy in the area and the system settings.

Typical Applications: Parking Garages – Warehouses - Manufacturing Facilities

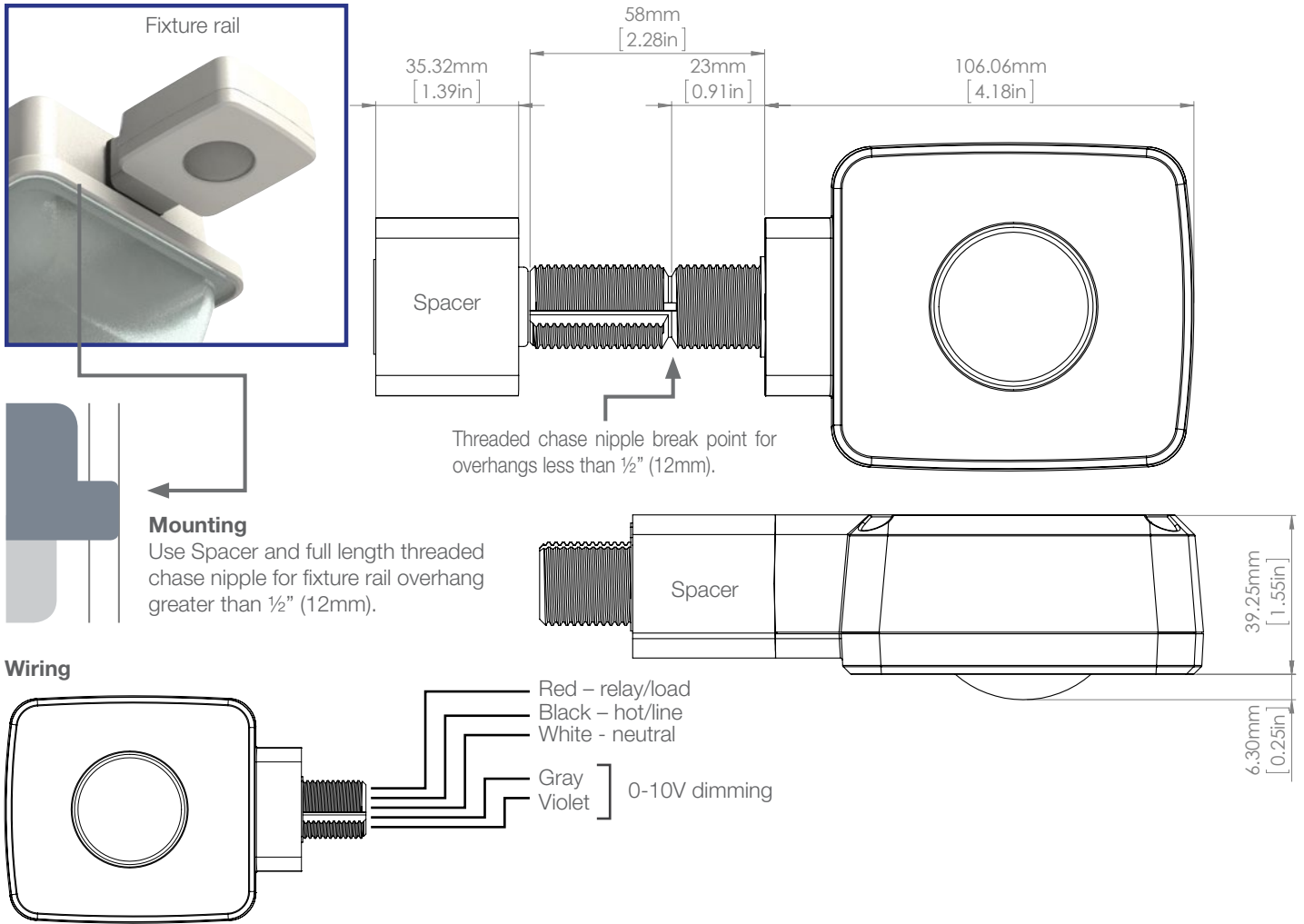
PART NUMBER	DESCRIPTION
BT-FMS-A	Bluetooth® enabled fixture mounted occupancy/daylight sensor and controller

Coverage



*Patent Pending

Douglas Lighting Controls Bluetooth® Fixture Controller



FUNCTIONALITY	Occupancy, CLC, bi-level level light set point, ON/OFF, adjustable OFF delay Download Douglas Lighting Controls App from Apple App store for configuration Outdoor Use – Rainproof when installed per instructions For installation with field-installed conductors of 60°C (140°F) minimum rating See Installation Manual for complete details
INPUT VOLTAGE	120/277/347VAC 60Hz
RANGE	150' Clear line of site. 50' through standard walls (distances may vary based on location and environment. Additional devices may be required at time of commissioning to ensure Bluetooth® network integrity.)
OCC. SENSOR RANGE	Up to 40 feet
LOAD RATINGS	800W @ 120VAC standard ballast 1200W @ 277VAC standard ballast 3300W @ 277VAC electronic ballast 1500W @ 347VAC standard ballast
DIMMING	0-10V
APPROVALS	Conforms to UL STD. 508 Certified to CSA STD. C22.2 #14 Contains IC: 8254A-B1010SP0 Contains FCC ID: W7Z-B1010SP0
WARRANTY	Standard 1-year

The Bluetooth® word mark and logos are registered trademarks owned by Bluetooth® SIG, Inc. and any use of such marks by Panasonic is under license. Other trademarks and trade names are those of their respective owners.

Rev. 1/23/17