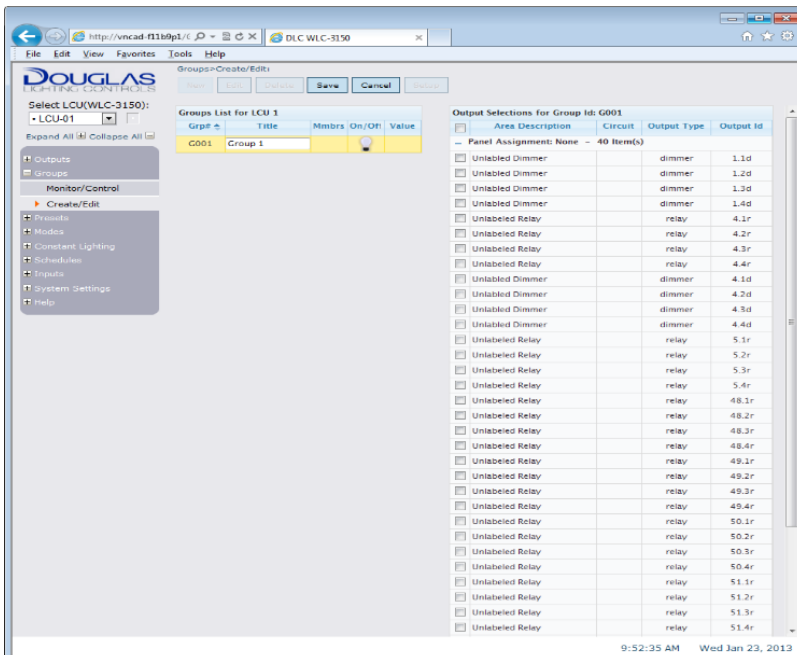


	PART #	DESCRIPTION	SPECIFICATION
	GWS-Basic	<ul style="list-style-type: none"> Includes server, connectivity devices, 16-port hub Installed in metal enclosure with cover 	<p>Power</p> <ul style="list-style-type: none"> Input 120Vac 60Hz 1.8A <p>Communication</p> <ul style="list-style-type: none"> 1000 BaseT Ethernet port Cat 5 or Cat 6 cable <p>Interface/Connectivity</p> <ul style="list-style-type: none"> Web Browser Interface Internet Explorer 9, 10, 11 Router: Cisco SF-110D-16-NA Ethernet Extender: Versatek VX-VEB160G4 <p>Environment</p> <ul style="list-style-type: none"> Indoors, stationary, non-vibrating, non-corrosive atmosphere and non-condensing humidity Ambient Operating Temperature: 32°F to 122°F (0°C to 50°C)
	GWS-Graphics	<ul style="list-style-type: none"> Includes server, connectivity devices, 16-port hub, graphics package Installed in metal enclosure with cover 	

Features

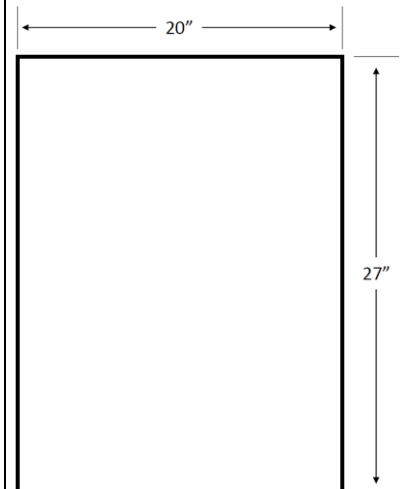
- Provides connectivity of WLC-3150 Lighting Control Unit to Ethernet
- Unifies multiple LCUs (up to 25) to a single interface
- Uses browser interface (Internet Explorer 9, 10, 11)
- Can be connected to a buildings Intranet
- Option to host Douglas Lighting Controls Graphics Package
- Complete system installed in metal enclosure

Interface



DIMENSIONS

- Complete system installed in metal enclosure



20" W x 27" H x 4.25" D

Metal Enclosure:

- Steel coated with heat fused polyester epoxy ANSI/ASA, 61 Grey finish

* Specifications Subject to Change without Notice

The GWS can connect up to 25 WLC-3150 LCUs via an existing facility Intranet and or can be connected through a private network. The private network is specified using the equipment shown below.

