

## Douglas Lighting Controls Bluetooth® Switches\*



### Features

- Bluetooth® wireless technology
- 4-button Switch
- 8-button Switch
- 1-Button & Dimmer Switch
- Field commission via Smartphone App
- LED status indicators
- 120/277VAC and 347VAC models

The Douglas Lighting Controls **Bluetooth®** Switches offer users finger tip control over lights in defined spaces. Each switch is a Bluetooth enabled device that communicates wirelessly with other Bluetooth devices within the Douglas Lighting Controls eco-system.

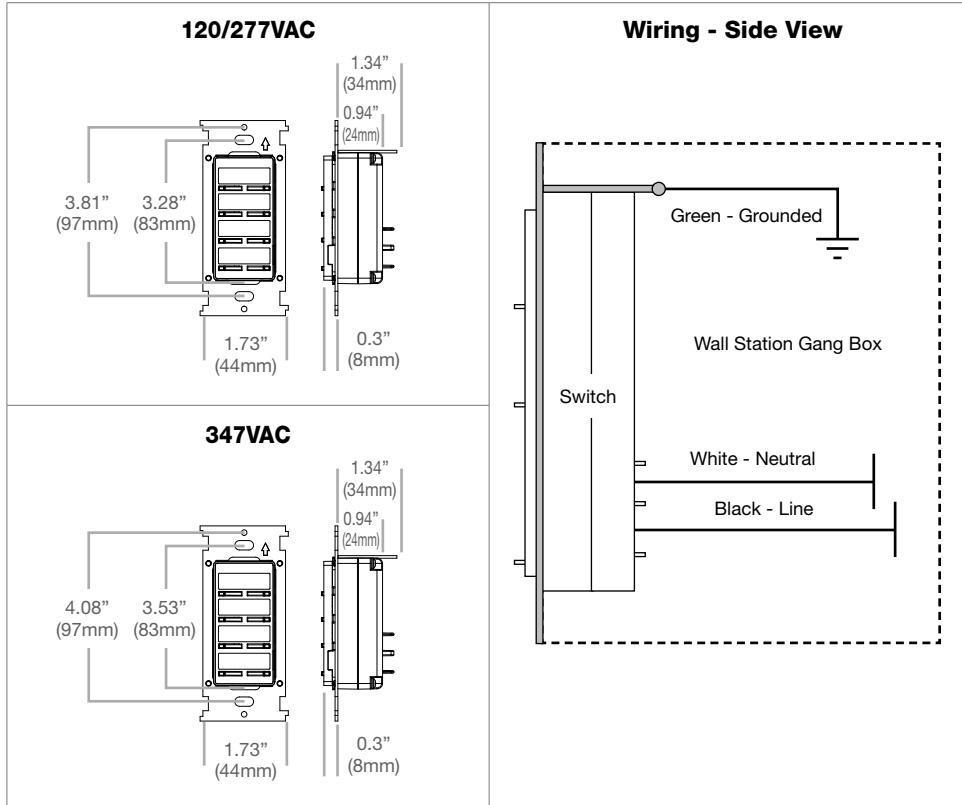
Available in 4-button, 8-button and 1-button & dimmer models, the switches are powered by 120/277VAC or 347VAC circuits to ensure reliable functionality. Switches are field commissioned via a Smartphone App.

**Typical Applications:** Where wireless fixture controls are required (requires a Douglas Lighting Controls Bluetooth device at fixture)

PART NUMBER	DESCRIPTION
BT-DMSW-U-A	Bluetooth enabled 1-button & dimmer wall switch 120/277VAC
BT-DMSW-3-A	Bluetooth enabled 1-button & dimmer wall switch 347VAC
BT-4BTSW-U-A	Bluetooth enabled 8-button wall switch 120/277VAC
BT-4BTSW-3-A	Bluetooth enabled 4-button wall switch 347VAC
BT-8BTSW-U-A	Bluetooth enabled 8-button wall switch 120/277VAC
BT-8BTSW-3-A	Bluetooth enabled 8-button wall switch 347VAC

\*Patent Pending

# Douglas Lighting Controls Bluetooth® Switches\*



<b>FUNCTIONALITY</b>	4-button, 8-button, DIM/ON/OFF Bluetooth enabled switches Download Douglas Lighting Controls App from Apple App store for configuration See Installation Manual for complete details
<b>INPUT VOLTAGE</b>	120/277 or 347VAC 60Hz (product specific)
<b>RANGE</b>	150' Clear line of site. 50' through standard walls (distances may vary based on location and environment. Additional devices may be required at time of commissioning to ensure Bluetooth network integrity.)
<b>APPROVALS</b>	Certified to CAN/CSA Std. C22.2 No. 14 Conforms to UL 508 Standard FCC Class A ASHRAE 90.1 2010 Compliant California Energy Commission Title 24 & NYLL 48 Compliant Contains IC: 8254A-B1010SP0 Contains FCC ID: W7Z-B1010SP0
<b>ENVIRONMENT</b>	Indoor, stationary, non-vibrating, non-corrosive atmosphere and non-condensing humidity Operating temperature: 32°F to 104°F (0°C to 40°C) Storage temperature: 14° to 140°F (-25° to 60°C)
<b>WARRANTY</b>	Standard 1-year

The Bluetooth® word mark and logos are registered trademarks owned by Bluetooth® SIG, Inc. and any use of such marks by Panasonic is under license. Other trademarks and trade names are those of their respective owners.

Rev. 1/23/17