


	PART No.	DESCRIPTION	SPECIFICATION
	<p>W-2000 OPC Server</p>	<ul style="list-style-type: none"> OPC is an open communication standard based on OLE/COM technology. OPC allows interoperability between MS Windows Control/Command/Supervision applications, industrial equipment (PLCs, sensors, actuators), and office management applications. The W-2000 OPC server provides a means to control the W-2000 Douglas Lighting Control System using an OPC client. The W-2000 OPC Server has been designed to the OPC Data Access specification and communicates with the Douglas WNP-2150 Network Manager providing the OPC server with mapped values. The mapped values allow control and status monitoring for each group and each individual relay within the Douglas system using a Read/Write method so that status can be obtained via a single point. 	<p>Installation Requirements</p> <ul style="list-style-type: none"> Windows XP, Windows Vista, Windows 7 (32 BIT). 33MB of Hard Disk Space. <p>Installation Procedure</p> <ul style="list-style-type: none"> Please contact our Project Design Department for further information.

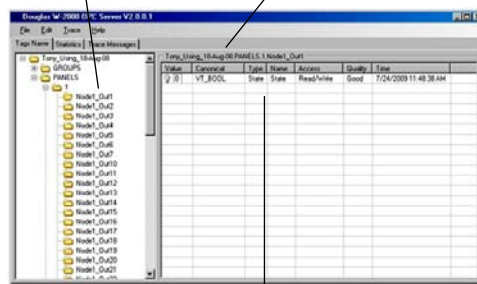
W-2000 OPC Server

Install the Douglas W-2000 OPC Server Software on the lighting control system dedicated computer.

Groups, Panels, Outputs Folders

Left pane displays all of the folders created by the OPC Server based upon the .dlc files loaded in the WNP-2150 Network Manager.

Tags Group Box



Selected Group or Relay status file details.